

# QFleet auction schedule

December/January 2005/06

## Brisbane

QFleet Workshop

72 Pineapple Street, Zillmere Qld 4034

**Inspection** 10am to 4pm on the two days prior to auction, from 8am on auction day

**Auction** Fridays 8.30am  
Saturdays 10am

## Gold Coast

Public Trust Office

Cnr Nerang and Garden Street,

Southport Qld 4215

**Inspection** 8.30am to 11am on auction day

**Auction** 11am

**Dates** Wednesday 4 January

## Bundaberg

90 Old Gin Gin Road

Splitters Creek, Bundaberg

(Behind the Oakwood Caravan Park)

**Inspection** 2pm to 4pm on auction day

**Auction** 11am

**Dates** Tuesday 13 December  
Tuesday 25 January

## Maryborough

Department of Primary Industries Forestry

Workshops Walker Street,

Maryborough Qld 4650

**Inspection** 9am to 11am on auction day

**Auction** 11am

**Dates** Wednesday 14 December  
Wednesday 18 January

## Rockhampton

Plant Hire Services Workshop

214 Richardson Road, Kawana Qld 4701

**Inspection** 12pm to 3pm the day before auction, 8.45am to 11am on auction day

**Auction** 11am

**Dates** Tuesday 24 January

## Mackay

Plant Hire Services Workshop

Corner Bridge Road and Hume Street

Mackay Qld 4740

**Inspection** 2pm to 4pm day before auction, 8.45am to 11am on auction day

**Auction** 11am

**Date** Monday 10 January

## Townsville

Plant Hire Services Workshop

Jurekey Street Cluden Qld 4811

**Inspection** 9am to 11am on auction day

**Auction** 11am

**Dates** Wednesday 11 January

## Cairns

Plant Hire Services Workshop

Cnr Adelaide and Donaldson Streets

Manunda Qld 4870

**Inspection** 8.30am to 11am on auction day

**Auction** 11am

**Dates** Thursday 12 January

## Toowoomba

Plant Hire Services Workshops

427 Greenwattle Street, Toowoomba Qld 4350

**Inspection** 11am to 2pm the day before auction, from 8.30am to 11am on auction day

**Auction** 11am

**Dates** Thursday 15 December  
Thursday 5 January

For further information about buying a vehicle from QFleet, contact Rodney Clough or Selina Walmsley on 1800 735 338 or email [auctions@qfleet.qld.gov.au](mailto:auctions@qfleet.qld.gov.au).

For the auction catalogue fax the Public Trustee on 1902 241 027 (dial from fax handset) or visit our web site at [www.qfleet.qld.gov.au](http://www.qfleet.qld.gov.au).

## QFleet working in partnership with you

As your fleet management partner, QFleet provides fleet and asset services to ensure enduring value for you and for Queensland. We help you achieve your outcomes through our comprehensive range of services including the following:

- vehicle leasing and strategic fleet management
- short-term and special purpose vehicle rentals through our Vehicle Hire Service
- vehicle maintenance, servicing and repairs through the Zillmere Workshop and the South Brisbane Service Centre
- the closest fuel and detailing to the Brisbane CBD at the South Brisbane Service Centre
- the only E10 fuel available near the Brisbane CBD
- insurance claims management and driver safety programs
- fleet advisory services.

QFleet clients are welcome to reprint articles from *Journey*, provided the article is used in full and QFleet is acknowledged as the author.

For further information or to contribute a story idea please contact:

Editor *QFleet Journey*

GPO Box 293

Brisbane Queensland 4001

Telephone: 07 3227 8193

Email: [journey@qfleet.qld.gov.au](mailto:journey@qfleet.qld.gov.au)

**Disclaimer:** The materials presented in this publication are distributed by QFleet as an information source only. This information is provided solely on the basis that readers will be responsible for making their own choices on the topics discussed herein and will seek expert advice as necessary. Information is correct at time of printing.

### If you need to change your contact details,

no longer wish to receive *Journey* or if you currently receive printed copies and would prefer an electronic copy, please email the editor at [journey@qfleet.qld.gov.au](mailto:journey@qfleet.qld.gov.au). Alternatively, fax or mail us your details:

Name:.....

Position:.....

Organisation:.....

Email address:.....

.....

City/town/suburb:.....

State:.....

Postcode:.....

Please fax to 07 3224 6190 or mail to GPO Box 293 Brisbane Qld 4001

*Journey* is also available in PDF format on QFleet's web site, [www.qfleet.qld.gov.au](http://www.qfleet.qld.gov.au).



*Keeping you informed about progress at QFleet and in the motor industry*

A message from the general manager .....	2	Fleetscape implementation.....	7
Fleetscape - the big picture.....	3	The policy advisory group meeting .....	8
Fleetscape vehicle selection .....	4	Queensland E10 outlets.....	9
More readers receive journey via email... 6		Queensland E10 outlets continued .....	10
Policy management module .....	6	QFleet auction schedule .....	12

## The Fleetscape Vehicle Selection System

### **QFleet is commencing implementation of a new Vehicle Selection system for clients – Fleetscape.**

As many clients are aware the Department of Public Works, utilising a project team from within QFleet, commenced the Whole-of-Government Fleet Management Review (WOGFMR) in August 2004.

Based upon WOGFMR's extensive consultation across Queensland, a new Vehicle Selection system has been designed with the needs of clients in mind. Fleetscape is the first of a number of whole-of-Government fleet management solutions that will result from the Review.

The Review's emphasis on consultation has continued throughout the design phases, seeking input on the system's function and design from representatives across all clusters.



*Vincent Dobbelaar, Felicity Hawthorne and Peter Robertson discuss the benefits of Fleetscape*

Product Manager Vincent Dobbelaar said the Fleetscape system provides simple, standardised online vehicle ordering.

"The system will allow users to have vehicle selection information at their fingertips and agencies will have the ability to better manage the vehicle selection process," Vincent said.

The development of a new system is part of an ongoing QFleet effort to reduce fleet costs whilst maintaining the highest service levels possible.

WOGFMR Operations Manager Peter Robertson, who has been coordinating client feedback, said it was satisfying that a product so 'hands on' in its creation will benefit so many users for years to come.

"After so much effort it is exciting to finally see Fleetscape come to fruition," Peter said.

"It has been built with whole-of-Government input and is designed to be used by clients across whole-of-Government."

WOGFMR Project Manager Felicity Hawthorne said that the openness and readiness of Departments and QFleet staff to contribute to the project has been exceptional.

"The WOGFMR Project Team and I.S.D (DPW Information Services Directorate) staff have turned innovative ideas into a professional, credible vehicle selection system with great practical features," Felicity said.

What are the key features of the Fleetscape Vehicle Selection module?

- ✓ A single system with the capability to interface with data from a variety of sources.
- ✓ The system will generate policy compliant vehicles from which the client can make their selection.
- ✓ The system will provide automated and informal reporting to all stakeholders.
- ✓ There will be total process and decision transparency in the system.

Implementation of the Fleetscape Vehicle Selection system will continue into the first quarter of 2006 and is expected to be completed by April.



**QFleet**  
Queensland Government  
Department of Public Works



# A message from the General Manager

With 2005 drawing to a close it is an opportune time to reflect upon the many successes QFleet has attained during the year.

QFleet has maintained its commitment to client service excellence in fleet management. We ensure agencies across Government are provided with their fleet needs in the most efficient and cost effective manner to guarantee their operational requirements are met.

As part of the State Government's plan to develop a sustainable Queensland ethanol industry, QFleet continues to encourage drivers to fill up with E10. Sites are regularly updated on our website and through our newsletter. At the end of November, sites numbered 101.

QFleet remains the country's largest subscriber to the national non-profit environmental program, *Greenfleet*. In 2005 tree planting under the *Greenfleet* program continued, with net plantings reaching 270 600.

QFleet also formed a strategic alliance with the Centre for Accident Research and Road Safety – Queensland (CARRS-Q) to utilise their safety related research to improve the safety of the fleet.

This issue of Journey is devoted to another key achievement for 2005 – the Whole-of-Government Fleet Management Review and its first product release, the Fleetscape Vehicle Selection system.

The WOGFMR team, working on behalf of the Department of Public Works and with the support of the Shared Services Implementation Office, carried out extensive consultation across Queensland. QFleet identified a clear client demand for a single whole-of-Government system to consistently apply vehicle selection policy and improve decision making, whilst retaining flexibility to meet operational needs.

The new vehicle selection process will ultimately result in a significant reduction in agency resource time, allowing clients to focus on core service delivery. The roles and responsibilities for QFleet, SSP and agencies are also now clearly defined with a view to progressing policy controlled accountability of vehicle selections.

Fleetscape is a mark of progress and confirms QFleet's commitment to improved service. Its benefits will permeate processes, systems, governance and infrastructure, providing overall value to Government and at the same time flexibility to meet agency needs and operational transport capability.

2005 has seen some significant market challenges for QFleet, particularly in selling used vehicles. The actions in place to reduce the build up of sales stock are working well and stock is quickly coming back to manageable levels.

Importantly, this situation has seen some very positive long term decisions for the Government fleet.

In October this year, the Premier announced a number of initiatives for the Queensland Government designed to both reduce the current level of vehicles QFleet are holding in stock and, more importantly, to reduce the cost of running the fleet.

The Government now has a stated preference for four cylinder vehicles and there is a total and permanent ban on V8 passenger vehicles for public servants (including the Premier, Ministers and CEO's).

Initiatives such as these will provide both financial and environmental savings for the Queensland Government with significant reductions in fuel usage and the longer term vehicle costs.

Overall it has been a very productive year for QFleet and I'd like to take this opportunity to wish you all a happy and healthy festive season and New Year. Often we see vehicle and road safety as an issue only for holidays and holiday activities; however, we would all do well to remember that road safety is an issue for every type of trip at all times of the year.

Regards

Bruce Grady

## Contacting QFleet

### QFleet Head Office

Level 16, Mineral House  
41 George Street  
Brisbane  
GPO Box 293  
Brisbane Queensland 4001  
Telephone 07 3224 4292  
Facsimile 07 3224 6242  
Website [www.qfleet.qld.gov.au](http://www.qfleet.qld.gov.au)

### A/Senior Fleet Consultant

Mary-Ann Micallef  
Telephone 07 3225 269  
Facsimile 07 3227 8216  
[mary-ann.micallef@qfleet.qld.gov.au](mailto:mary-ann.micallef@qfleet.qld.gov.au)

### Fleet Teams

Desiree Farry **Fleet Consultant**  
Telephone 07 3225 2690  
Facsimile 07 3227 8216  
[desiree.farry@qfleet.qld.gov.au](mailto:desiree.farry@qfleet.qld.gov.au)

### David Wedrat Fleet Administrator

Telephone 07 3225 2686  
Facsimile 07 3227 8216  
[david.wedrat@qfleet.qld.gov.au](mailto:david.wedrat@qfleet.qld.gov.au)

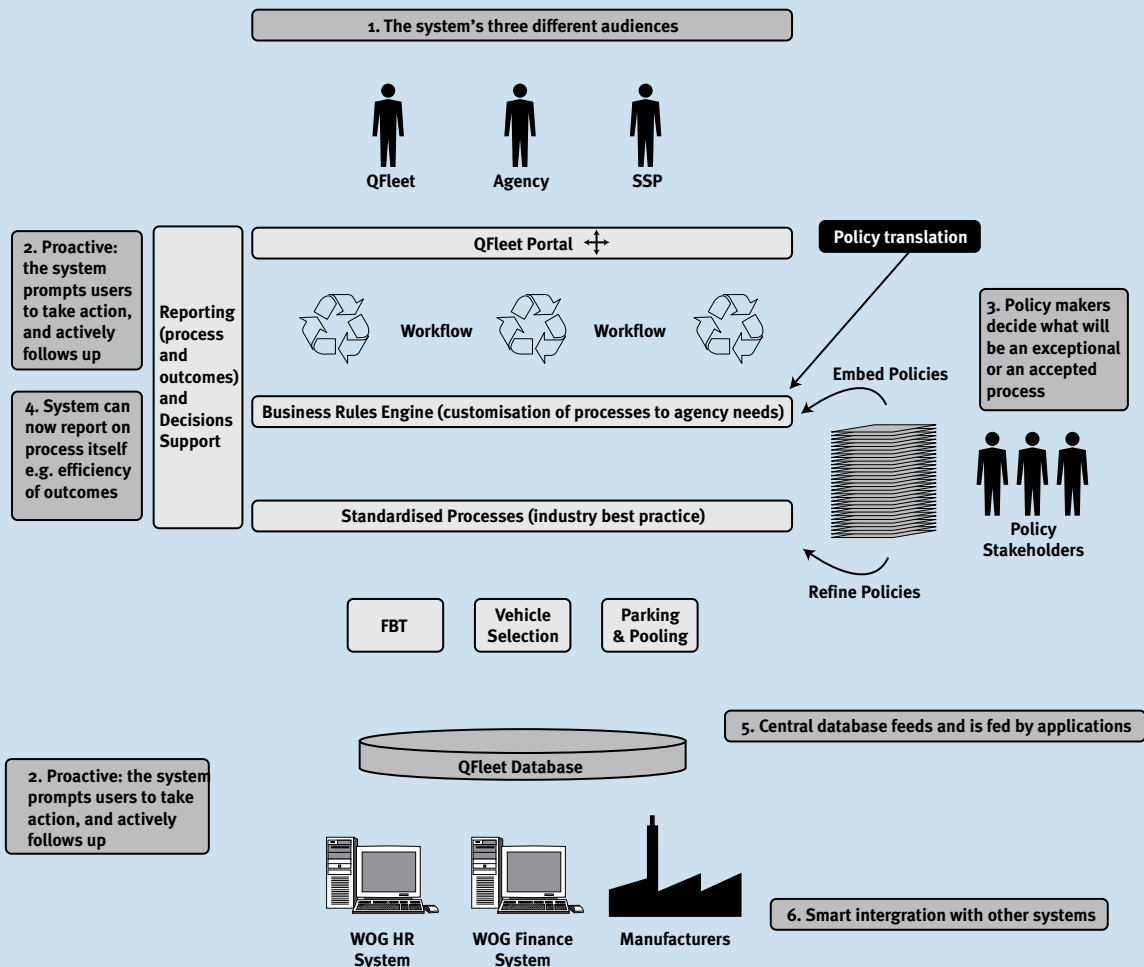
# FLEETSCAPE

## the big picture

Before we explore the new system in detail, it is worthwhile to take a high level look at the 'big picture'.

The key features:

- 1 The new system is aimed at three disparate audiences, each with differing requirements, yet all serviced through the same online system portal.
- 2 Users are not required to go searching in the system for their tasks; the system proactively sends tasks to people and escalates these if required.
- 3 A rules engine allows users to tailor processes and outcomes to their own needs.
- 4 A new focus: reporting on the journey THROUGH the process and on HOW outcomes were achieved, not just on WHAT outcomes were achieved.
- 5 A single data repository means reconciliation between disparate data sources is minimised and integrity and security can be assured through central management.
- 6 Using latest industry standards for data integration, such as WebServices, data is seamlessly and efficiently integrated.



# Fleetscape Vehicle Selection two modules explored

Clients using the new Vehicle Selection system will be utilising two distinct system 'modules' to perform the new vehicle selection process. These modules—online ordering and policy management—are explored in further detail below.

## Online Ordering module

The new online ordering process for new and replacement vehicles will be made up of four simple online steps:

### Step 1 Confirm your details

**Confirm the information for the replacement vehicle**

- Replacing your vehicle or ordering an additional one requires you to confirm your details. For instance, your business group, the operating environment and a service delivery description.

- For replacement vehicles the entry fields in the online form will already be filled out with your current vehicle's details; however, you can change any or all of these defaults.

- FBT data is not compulsory; however, if you do enter FBT data the system will add it into the estimated whole of life costs of the vehicle.

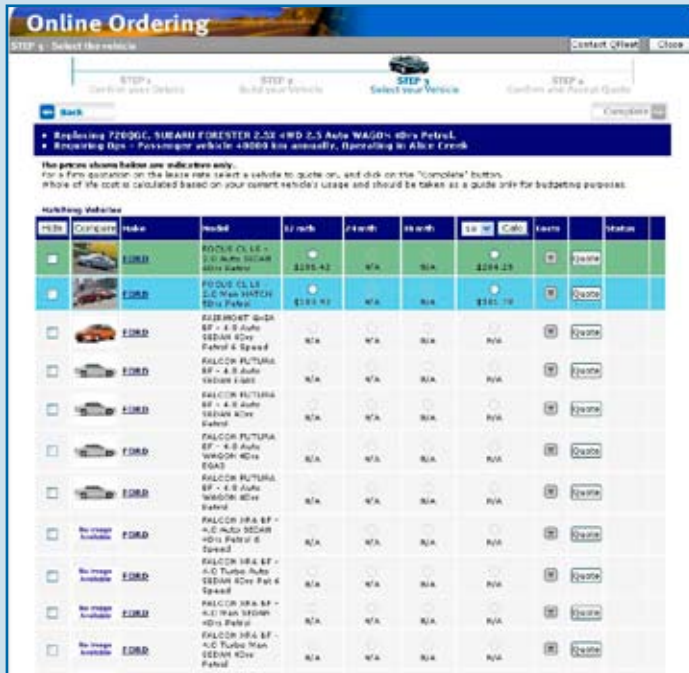
### Step 2 Build your vehicle

- To build your vehicle you must identify the type of vehicle you need, for example, a passenger four cylinder automatic petrol sedan. By doing this you will limit the responses later in the process.

**This is your Agency's policy that applies to this selection**

Fleetscape Vehicle Selection – two modules explored

# Step 3 Select your vehicle



■ Now you have a list of vehicles that meet your policy and / or your input from the last step.

■ Note that the dollar values quoted here will be estimates only and will include estimated whole of life costs per annum and per kilometre.

■ The whole of life costs are for the lease, fuel, accessories and FBT (where input).

■ You can get quotes for any or all of the leases offered.

■ For your convenience the vehicles can be lined up side by side on your screen so that you can compare their specifications.

# Step 4 Confirm and accept quote

■ This step is your chance to review your order and decide whether to lease the vehicle you have selected.

■ If you confirm you want the vehicle, the workflow system will automatically send your online vehicle selection to your agency's Authorising Officer for approval.



## Key feature summary:

■ Allows Agency Ordering Officers to exchange a vehicle due for replacement with a vehicle that complies with Agency Policy.

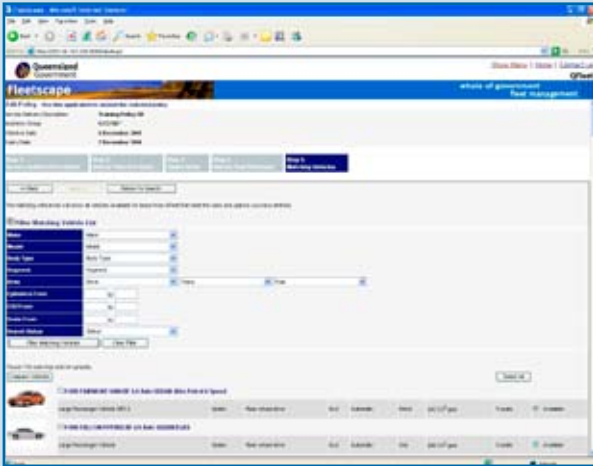
■ Officers can order a new vehicle online at their desktop.

■ Allows Ordering Officers, when required for operational reasons, to disable Agency Policy and request a non compliant vehicle (subject to authorisation).

## Fleetscape Vehicle Selection – two modules explored

# Policy Management module

One of the most common requests to come out of the consultation across Queensland was the delivery of a system that embedded vehicle selection policy, thus enabling automated decision making.



Fleetscape users can rest assured their selections are at all times in line with agency and whole-of-Government policy.

The Policy Management module is essentially an online fleet management tool. Using this tool Agency Policy Managers can add, edit or delete policies for vehicle selection relevant to their agency.

Prior to system roll out, QFleet implementation teams will work with agencies to review policy and translate it into vehicle selection rules. These rules will act as filters in the determination of appropriate vehicle configurations to meet the service delivery required.

The application of the defined policy will result in a list of 'matching vehicle/s' available for lease from QFleet.

Ultimately the policy module is intended to function as an online fleet management tool to ensure a compliant fleet profile and savings for agencies.

# More readers receive *Journey* via email

***Journey* is now available in PDF format for emailing to subscribers. Over one hundred readers swapped to the electronic format last month.**

The electronic newsletter is better for the environment, it reaches subscribers fast and it saves money.

And the electronic format is produced in full colour.

You can copy and store complete issues or selected articles for future reference, and you can also forward them to colleagues.

An added feature of the electronic newsletter is the live links we provide in the text so that you can simply click and be taken directly to websites that provide more information.

To move to our emailing list, here's what to do:

On the home page of the QFleet website at [www.qfleet.qld.gov.au](http://www.qfleet.qld.gov.au), click into the link entitled "Electronic

*Journey*". Your email will go directly to the editor. You may also choose to delete your name from our postal mailing list through this link.

Your electronic *Journey* will reach you wherever you are, even if you change locations, unless you change your email address.

Email addresses will only be used by QFleet and will not be given to third parties.

If you wish to keep receiving a paper copy, take no action and you'll remain on our postal mailing list. If you opted for email but are still receiving a hard copy of *Journey*, please supply the exact name and address that appear on the envelope and we will ensure your details are swapped over.

# Fleetscape implementation



Rebecca Hartwell, Peter Robertson and Lindy Hall

**QFleet implementation teams have been set up to manage and deliver the roll out of Fleetscape modules to clients, including the ongoing training of SSP/agency implementation teams and staff.**

There are three implementation teams for Vehicle Selection:

**Team 1** (cluster 1 and 5):  
Vince Dobbelaar (team leader),  
Paul Barry and Pat Tyler

**Team 2** (cluster 2 and 4):  
Peter Cox (team leader),  
Carmel Muscillo and Errol Wood

**Team 3** (cluster 3):  
Peter Robertson (team leader),  
Lindy Hall and Bec Hartwell

All agencies will be contacted progressively to seek advice and direction on how best to plan implementation of the new system to correspond with the particular needs of their agency.

The implementation period will span January – April 2006.

In addition to the formation of the implementation teams, a comprehensive Training Manual is being developed for Fleetscape users and will be available live on the system.

QFleet welcomes Errol Woods (Corporate Solutions Queensland, Cluster 2) and Rebecca Hartwell (CorporateLink, Cluster 3) who have temporarily joined the Review team.

They both joined in response to an invitation sent to each cluster to nominate staff to aid in the implementation of the new system.

“It has been fulfilling to see my client perspectives being implemented into the new system,” Rebecca said.

“I am looking forward to assisting QFleet implement Fleetscape throughout Cluster 3.”

This cross-agency cooperation and learning has been a huge success and their combined expertise will be a vital link in the implementation of the new system in their respective clusters.



Peter Cox and Errol Wood

“It has been an excellent opportunity for me to be involved with this new and innovative fleet management system,” Errol said.

“I will certainly be able to take this knowledge back to Corporate Solutions Queensland to assist the agency clients in Cluster 2 that we service.”



Paul Barry and Vincent Dobbelaar

# The Policy Advisory Group holds first meeting

**After sending invitations to all clusters calling for nominations for membership, QFleet is pleased to announce the formation of the Policy Advisory Group (PAG). The first meeting was held on 9 November 2005.**

The Group, comprising senior representatives of agencies and Shared Service Providers, will manage whole-of-Government strategic vehicle selection policy development and review.

Key responsibilities of the PAG include: the development of whole-of-Government fleet management policies; monitoring and reporting



*Mr Peter McMurtrie,  
Emergency Services Executive Manager*

the performance and compliance of agencies to policies; and, providing opportunities for benchmarking and information exchange across agencies.

QFleet General Manager, Bruce Grady, said that the first meeting provided confirmation that the PAG is a much needed opportunity for senior stakeholders to come together and influence policies throughout Government.

“The group identified policies we propose to review and present to the Whole-of-Government Service Integration Committee (WOGSIC) in the near future, and all members were enthusiastic about the benefits for policy implementation that the new vehicle selection system will provide,” Bruce said.

Emergency Services Executive Manager, Peter McMurtrie, said the first meeting of the group made it obvious that the mix of departments represented, and the relevant subject knowledge of the representatives, augers well for achieving results that will meet the specific needs of all agencies.

“I am pleased and proud to have been selected as part of a group which has a common goal of filling the policy void,” Peter said.

“The work of the PAG will enable all Government employees to be clear in what are the expectations when they administer or take direct charge of a Government vehicle.”

The regular review of policy will result in a more proactive management approach. The next meeting of the PAG is scheduled for 7 December 2005.

**Policy Advisory Group membership:**  
Max Braithwaite  
Stewart Patterson  
June James  
Angus Draheim  
Jean Clifford  
Susan Mackie  
Graeme Atkins  
Graeme Harding  
Neil O’Sullivan  
Peter McMurtrie  
Bruce Grady.

# Customer Performance Price reports available

Your organisation’s Customer Performance Price (CPP) reports for 2005 are complete and ready to access.

QFleet’s CPP system calculates your insurance premium on 1 October each year.

The system assesses the accident claims history of all your fleet vehicles for the financial year.

Based on your claims performance, the system adjusts QFleet’s standard base insurance premium by providing a discount or adding a loading.

Want to find out more? Log onto the Client Access System (CAS).

# Queensland E10 outlets

**Where possible, Queensland Government vehicles are to be fuelled with E10 as part of the Government's plan to develop a sustainable ethanol industry in Queensland.**

The Queensland Government fleet is to use BP outlets when purchasing E10 to gain the significant pricing benefits from this arrangement. However, where BP has no E10 retail presence an alternative site may be used as per the list provided.

## Brisbane Area

- QFleet Depot, Colchester St, South Brisbane
- BP Cannon Hill, Cnr Creek and Wynnum Roads, Cannon Hill
- BP Capalaba, Old Cleveland and Dollery Roads, Capalaba
- BP, 979 Stanley St, East Brisbane
- BP Eastern Heights, Cnr Robertson and Grange Roads, Eastern Heights
- BP Gliderway, 62 Brisbane Road, Ebbw Vale
- BP Express, 237 Brisbane Rd, Goodna
- BP Express Plaza, Cnr Moggill and Cedarleigh Roads, Kenmore
- BP Thornlands, Cnr Bloomfield and South Streets, Thornlands
- BP Tingalpa, Cnr Manly and Wynnum Roads, Tingalpa
- BP Express Virginia, 1830 Sandgate Rd, Virginia
- BP Wishart, 528 Newnham Rd, Wishart
- Neumann Beenleigh, 21 City Rd, Beenleigh
- Neumann Eagle Farm Depot, 23 Theodore St, Eagle Farm
- Neumann Morningside, Cnr Wynnum and Junction Rds, Morningside
- Neumann Underwood, 3077 Logan Road, Underwood
- Neumann Lindum, Cnr Sibley and Kianawah Roads, Wynnum West

- Evolve Mt Warren Park, 40 Rochester Drive, Mt Warren Park
- South East Queensland Fuels, 61 Ashover Road, Rocklea
- Independent Fuel Supplies, 3198 Moggill Road, Bellbowrie
- Freedom Fuels Acacia Ridge, 281 Leoroyd Road, Acacia Ridge
- Freedom Fuels Beenleigh, 52 Logan River Road, Beenleigh
- Freedom Fuels Brendale, Cnr Southpine and Kremzow Roads, Brendale
- Freedom Fuels Ningi, 1473 Bribie Island Road, Bribie Island
- Freedom Fuels Eight Mile Plains, 2494 Logan Road, Eight Mile Plains
- Freedom Fuels Fernvale, Brisbane Valley Highway, Fernvale
- Freedom Fuels Goodna, 114 Brisbane Terrace, Goodna
- Freedom Fuels Grange, Cnr Days Road and Colston Street, Grange
- Freedom Fuels Inala, Cnr Rudd and Freeman Streets, Inala
- Freedom Fuels Kedron, 277 Gympie Road, Kedron
- Freedom Fuels Kuraby, 1319 Beenleigh Road, Kuraby
- Freedom Fuels Marsden, 502 Browns Plains Road, Marsden
- Freedom Fuels Mt Gravatt, 154 Creek Road, Mt Gravatt
- Freedom Fuels Nudgee, Cnr Nudgee and Tufnell Roads, Nudgee
- Freedom Fuels Redbank Plains, Cnr Kruger Street and Henty Drive, Redbank Plains
- Freedom Fuels Brisbane Market, Sherwood Road, Rocklea
- Freedom Fuels Rocklea, 46 Sherwood Road, Rocklea
- Freedom Fuels Seven Hills, Cnr Oateson Skyline and the Corso, Seven Hills
- Freedom Fuels Thornside, Cnr Rickert and Thornside Roads, Thornside

- Freedom Fuels Wakerley, Cnr Green Camp and Molle Roads, Wakerley
- Freedom Fuels West Ipswich, Cnr Brisbane Rd Tiger Sts, West Ipswich
- Freedom Fuels Willawong, 233 Sherbrooke Road, Willawong
- Freedom Fuels Wooloowin, Cnr Shaw Rd and Emma St, Wooloowin

## Sunshine Coast Area

- BP Nambour Depot, Bli Bli Road, Nambour
- Caltex Gold Nugget Gympie Service Station, 5 Bruce Highway, Gympie

## Gold Coast Area

- Independent Fuel Supplies, Cnr Nerang Southport Rd and Olsen Ave, Ashmore
- Independent Fuel Supplies, 85 Spencer Road, Nerang
- Independent Fuel Supplies, Markeri Street and Robina Parkway, Robina
- Independent Fuel Supplies, 9 Tallebudgera Creek Road, West Burleigh
- Neumann Nerang, Cnr Spencer Road and Grenfell Street, Nerang
- Neumann Southport, 6/1 Bailey Crescent, Southport

## Toowoomba Area

- BP Dalby Depot, 1 Wyley St, Dalby
- BP East, Cnr Bridge and Mary Streets, Toowoomba
- BP Herries Street, Cnr Herries and Neil Streets, Toowoomba
- BP Toowoomba City, Ruthven and James Streets, Toowoomba
- BP Truckstop, Anzac Street, Toowoomba
- Caltex Jondaryan, Warrego Highway, Jondaryan
- Caltex Garden City, 877 Ruthven Street, Toowoomba
- Caltex Superstore, Cnr James and Ruthven Streets, Toowoomba
- Caltex, 383 Taylor St, Toowoomba

## Queensland E10 outlets continued



### Warwick Area

- BP Koremans, 180 Wood St, Warwick
- Caltex Goondiwindi Truckstop, Boundary Road, Goondiwindi
- Caltex Stanthorpe, New England Highway, Stanthorpe
- Caltex St George, 102 Victoria Street, St George
- Caltex Truck n Travel, New England Highway, Warwick
- Freedom Fuels Allora, 1 New England Highway, Allora

### Bundaberg Area

- BP Bundaberg Depot, 33 Princess Street, Bundaberg
- BP Logging Creek, Isis Highway, Cordalba

### Maryborough Area

- BP, Ferry St, Maryborough

### Rockhampton Area

- BP, Albert St, South Rockhampton

### Mackay Area

- BP Oak Street, Oak Street and Tropical Avenue, Andergrove
- BP Whitsunday, 112 Shute Harbour Road, Cannonvale

- BP City Gates, 324 Nebo Rd, Mackay
- BP Shakespeare, 114 Shakespeare Street, Mackay
- BP Proserpine, Bruce Highway, Proserpine
- BP Sarina, Broad Street, Sarina

### Townsville Area

- BP Ayr Depot, 48 Lynch Street, Ayr
- BP Garbutt, 2 Bombala St, Garbutt
- BP Ingham, 66 Townsville Rd, Ingham
- Ampol, 103 Thuringowa Drv, Kirwan
- Caltex Sunland, Edward and Burke Streets, Ayr
- Caltex Garbutt, 26-28 Pilkington Street, Garbutt
- Caltex Ingham, 25 Herbert St, Ingham

### Cairns Area

- Ampol Reservoir Rd, 31 Reservoir Road, Cairns
- Ampol, 230-238 Sheridan St, Cairns
- Caltex (Tom Dooley Smithfield P/L), Captain Cook Highway, Cairns
- Caltex Manunda, 1 Hoare St, Cairns
- Caltex Petroleum Distributor P/L, Draper Street, Cairns
- Caltex Petroleum Distributor P/L, Cnr Bunda and Kenny Sts, Cairns
- Caltex Portstar, 30-36 Kenny St, Cairns
- Caltex Woolworths, 131 Sheridan Street, Cairns
- Caltex Mareeba, 70 Byrne St, Mareeba
- Caltex, Bruce Highway, Mourilyan
- Caltex, Bruce Highway, Tully

Regular updates of E10 locations are available at [www.qfleet.qld.gov.au](http://www.qfleet.qld.gov.au). Further information

relating to E10 sites and availability can be obtained through Queensland Purchasing. Contact

Barbara Clarke on 07 3224 7320 or [Barbara.clarke@qp.qld.gov.au](mailto:Barbara.clarke@qp.qld.gov.au).

# Saturday auctions at QFleet



Buyers inspect one of the vehicles available at QFleet's Brisbane auction

**QFleet has introduced Saturday auctions. Buyers can now bid for a quality second-hand vehicle at either the Friday or Saturday auctions held each week in Brisbane.**

Saturday is a popular day for motor vehicle buying and selling because it offers busy couples and families the time and flexibility to shop together for their next car.

“These vehicles offer excellent value for money. All have been fully maintained, carry a full service history, and are prepared to a high standard for sale,” QFleet’s General Manager, Bruce Grady said.

“It is a great opportunity for prospective buyers to inspect quality ex-government vehicles at their convenience before they buy,” he said.

If you can’t wait for the next auction, you can also call to arrange a time to purchase from QFleet’s fixed price vehicles.

Vehicles will be available for inspection on Wednesday, Thursday, and Friday and from 8.00am each Saturday at 72 Pineapple Street, Zillmere. The auction will commence at 10.00am.

More information about buying a vehicle, including how to bid at a QFleet auction is available on the QFleet website, [www.qfleet.qld.gov.au](http://www.qfleet.qld.gov.au).

## Latest news

### Credit card payments

Looking for an easier way to pay your QFleet account?

In order to improve our service to you, clients can now pay by credit card or eftpos. Payments can be made either by telephone 3224 4071 or fax 3224 5146.

### Partnership formally recognised

Since 2001, QFleet and the Queensland University of Technology, through the Centre for Accident Research and Road Safety – Queensland (CARRS-Q), have worked closely on a number of research programs. Recently this relationship became formally recognised when a Memorandum of Understanding was signed.

CARRS-Q identify, assess and initiate research to improve safety on our roads, in our workplaces and in our communities.

As CARRS-Q lead the way in identifying emerging road safety and accident prevention issues, this partnership will allow QFleet to access the very latest research findings.

With some 13,000 vehicles on the road throughout Queensland, and many more drivers actually using QFleet vehicles, this partnership will assist our clients to stay safe on the roads.



Dr Jeremy Davey, Deputy Director, CARRS-Q and Bruce Grady, General Manager, QFleet